

3/4,6
Watt



IP 20

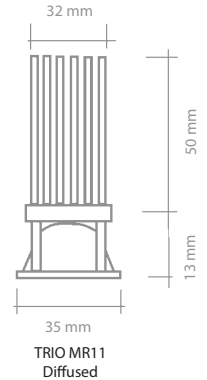
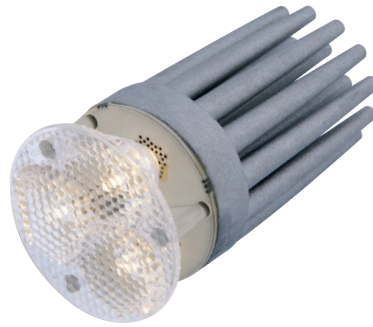
CRI>80



EMC



t_a -20° ÷ +40°C



Spot a LED di potenza - 3 x 350/500mA

- Si adatta a faretti per lampadina dicroica Ø 35mm
- Fornito con cavo da 50 cm
- Lente disponibile in tre differenti versioni: fascio stretto, medio e largo.
- Disponibile nei colori 2700K, 3000K, 4000K e 5000K

High Brightness LED spot - 3 x 350/500mA

- Suitable for being built in standard Ø 35mm downlights
- Supplied with 50 cm cable
- Different lens degrees available: narrow, medium and wide beam.
- Available in standard colours 2700K, 3000K, 4000K e 5000K

High Brightness LED-Spot - 3 x 350/500mA

- Für Einbau in Ø 35mm Einbaustrahler geeignet
- Mit 50 cm Kabel
- Verfügbaren Ausstrahlwinkel der Linse: engen, mittleren und breiten Winkel
- Verfügbar in Standardfarben 2700K, 3000K, 4000K und 5000K

Spot à LED de puissance - 3 x 350/500mA

- Adaptable aux spots encastrables pour lampe dichroïque Ø 35mm
- Livré équipé d'un câble de 50 cm de longueur
- Lentille disponible en trois versions: faisceau étroit, moyen ou large
- Disponible en couleurs standard 2700K, 3000K, 4000K et 5000K

Foco a LED de potencia - 3 x 350/500mA

- Adaptable en los foquitos empotrables para lámparas dicroicas de Ø 35 mm
- Suministrado con cable de 50 cm
- Lente disponible en tres diferentes versiones: haz luminoso estrecho, medio ó amplio
- Disponible en colores estandar 2700K, 3000K, 4000K y 5000K

Part number	K	Lumen Typ.	Beam	Lux at 1 m	I (typ.)	V (typ.)	W (typ.)	Ø	Standard Size	EEC**
A40TR1127W00	2700K	357	Wide 40°	860/1060	350/500 mA	9,2V	3/4,6W	35 mm	MR11	D
A40TR1127M00	2700K	357	Medium 25°	1130/1530	350/500 mA	9,2V	3/4,6W	35 mm	MR11	D
A40TR1127N00	2700K	357	Narrow 12°	3580/4800	350/500 mA	9,2V	3/4,6W	35 mm	MR11	D
A40TR1130W00	3000K	370	Wide 40°	960/1280	350/500 mA	9,2V	3/4,6W	35 mm	MR11	D
A40TR1130M00	3000K	370	Medium 25°	1290/1720	350/500 mA	9,2V	3/4,6W	35 mm	MR11	D
A40TR1130N00	3000K	370	Narrow 12°	4150/5250	350/500 mA	9,2V	3/4,6W	35 mm	MR11	D
A40TR1140W00	4000K	390	Wide 40°	1040/1400	350/500 mA	9,2V	3/4,6W	35 mm	MR11	C
A40TR1140M00	4000K	390	Medium 25°	1390/1840	350/500 mA	9,2V	3/4,6W	35 mm	MR11	C
A40TR1140N00	4000K	390	Narrow 12°	4490/5660	350/500 mA	9,2V	3/4,6W	35 mm	MR11	C
A40TR1150W00	5000K	450	Wide 40°	1140/1480	350/500 mA	9,2V	3/4,6W	35 mm	MR11	C
A40TR1150M00	5000K	450	Medium 25°	1580/2080	350/500 mA	9,2V	3/4,6W	35 mm	MR11	C
A40TR1150N00	5000K	450	Narrow 12°	5420/7100	350/500 mA	9,2V	3/4,6W	35 mm	MR11	C

** The EEC specification refers in each case to the installed LED light source(s)

